

# Wesley College

Issue 2014/3

Email: [admin@wesley.school.nz](mailto:admin@wesley.school.nz), Webpage: [www.wesley.school.nz](http://www.wesley.school.nz)

April 2014



## WHAKATAUKI

He nui maunga e kore taea te whakaneke, he nui ngaru moana mā te ihu o te waka e wāhi.

A great mountain cannot be moved, a giant wave can be broken by the canoe's prow.

Do not give up too easily - some things are possible.

## POINTS OF INTEREST

- ◆ Board of Trustees Meeting Schedule
- ◆ NZQA Leaflet for Y11-13 students and their parents
- ◆ Change of Date for the 170th Celebrations
- ◆ Term Two Calendar

## BOARD OF TRUSTEES

<i>Elected Parent Representatives</i>		<i>Proprietors Appointed Representatives</i>	
Mrs Angelina Betham	02108201021	Ms Lana Lazarus	095719155
Mrs Susan Easter	078254433	Mr David McGeorge	078540016
Mr Jeff Johansson	0211364723	Mr Norman Johnston	095757524
Ms Ruby Schaumkel		Mrs P Tala'imanu	092634484
Mrs Uinise Smythe	0211195244	Mr Ben Hancock	<i>Staff Rep</i>
Mr Ian Faulkner	<i>Principal</i>	Mr Kieran Withers	<i>Student Rep</i>

## BOARD OF TRUSTEES - BOARD MEETING SCHEDULE

Meetings are held at 5pm in the meeting room beside the dining room.

Parents and caregivers are welcome to attend the open section of the Board meeting.

May 8	June 12	July 24	August 14
September 11	October 16	December 11	

## POLYFEST ACKNOWLEDGEMENT

Congratulations to all our groups who performed on each of the stages.

I also extend a huge thank you to all the parents, caregivers, guardians and ex-students who assisted with preparing the groups for their performances, and to the school and hostel staff who assisted on each of the stages at this year's festival. Without your commitment to assist our students we would not have been able to put forward the very polished groups we have. Thank you.

## 2014 PREFECTS

Congratulations to the following students on their appointment as College Prefects.

**SENIOR PREFECT:** Sione Vahaakolo  
**HEAD BOY:** Robbie Tutuila  
**HEAD GIRL:** Le'ota Inoke

### PREFECTS:

Oto Faiva  
Joshua Maiama  
Victoria Tagicakibau

Tevita Fifita  
Ivana Meleisea  
Tyran Wynyard

Fokikovi Havili  
Malia Palusa

Falani Lovo  
Michael Smythe

Te Puia Luteru  
Tuitala Tauaika



## BEGINNING TERM 2, 2014

### TERM TWO COMMENCES:

**Boarders** check in by 5pm Sunday 4 May 2014.

**Day students** sign in by 8:20am Monday 5 May 2014.

### WINTER UNIFORM

All students are to wear their winter uniform from the beginning of term two.

### MEDICATION

Please ensure all medication is handed into the Matrons on arrival with instructions for its use.

### CLOTHING

Please ensure all items of clothing are named and your student has a full set of the number one uniform, and for boys their white shirts are able to be buttoned up at the neck and their ties are the right size.

Please also ensure that your student has the correct footwear for school.

### TERM 2 EXEAT

Term 2 exeat is scheduled for Tuesday 3 June 2014.

This means students have an extra long weekend. Boarders return Tuesday 3 June before 5pm.

Day students sign in Wednesday 4 June by 8.20am to re-commence school.

### MID-YEAR EXAMINATIONS

- Seniors, Yr 11-13 mid-year examinations will be held **5 - 11 June 2014**.
- Juniors, Yr 9-10 mid-year examinations will be held **12 - 18 June 2014**.

Students should ensure that they are prepared for their mid-year examinations.

## NZQA INFORMATION LEAFLET

Please read the enclosed leaflet from NZQA relating to 'Information for students and their parents, whanau or caregivers for the 2014 NCEA Qualifications'.

The leaflet has useful information for Y11-13 students sitting their NCEA Level 1, 2 or 3 in 2014.

## 170th REUNION DATE CHANGE

The Wesley College Old Students Association has considered the effect that the announcement of 20 September 2014 as the date of the New Zealand General Election may have on the planned 170<sup>th</sup> Celebration and has decided to hold this important event in the life of Wesley College one week earlier.

The 170th Reunion will be held over the weekend of **13-14 September 2014**.

This is the closest available weekend to the Land Grant made to Rev. W Lawry Superintendent of the Wesleyan Mission on 4 October 1844 that allowed for the Wesleyan Native Institution to be founded. Further details about the Reunion will be advertised as it comes available.

## EX-PUPIL ACKNOWLEDGEMENTS

Congratulations to the following ex-pupils who have been selected to play for their respective teams in the 2014 Super 15 Rugby.

BLUES:	Frank Halai [2005-2007], Charles Piutau [2005-2009]
CHIEFS:	August Pulu [2006-2008]
CRUSADERS:	Nepo Laulala [2009-2010]
HIGHLANDERS:	Malakai Fekitoa [2009-2010]
STORMERS:	Sailosi Tagicakibau [2001-2001]
WARRATAHS:	Sekope Kepu [1999-2004]



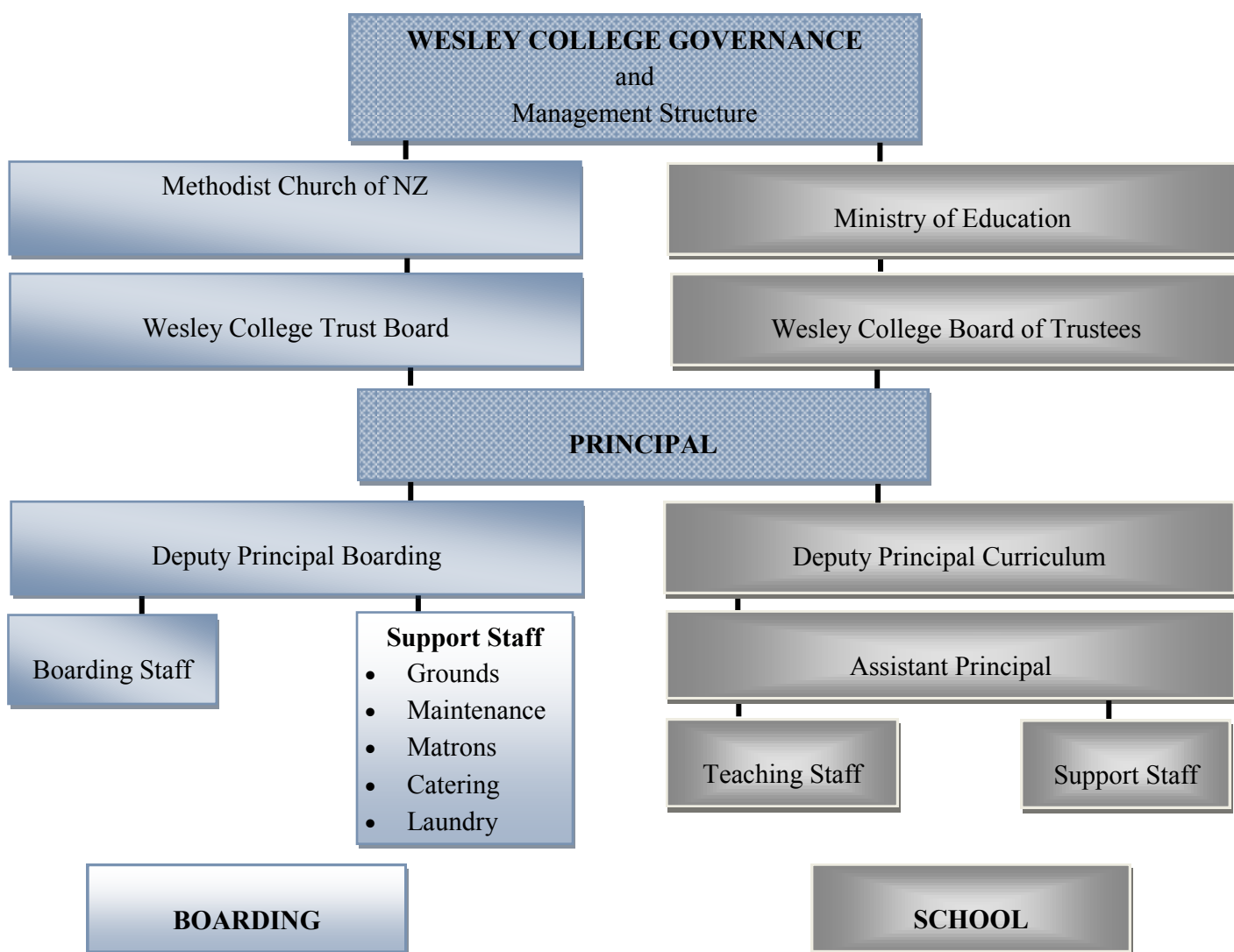
**BOARDING FEES AND / OR SCHOOL FEES?**

As an Integrated school Wesley College has two Boards: the Wesley College Trust Board and the Wesley College Board of Trustees. The Wesley College Trust Board (the Proprietor) owns the Wesley College Property on behalf of the Methodist Church of New Zealand – Te Haahi Weteriana o Aotearoa and regulates the private boarding establishment. The Wesley College Board of Trustees controls the school.

The Wesley College Trust Board charges boarding fees for boarders. The true cost for each boarder at Wesley College is in excess of \$15,000 per annum. The Trust Board subsidises this cost. The most any family is asked to pay is \$7,260.00 per annum for each boarder. Day students are levied a ‘food service’ charge of \$1035.00 per annum or \$5.56 per day. This compulsory charge provides for a cooked lunch each day. The Proprietor of many Integrated Schools also charge a levy for Attendance Dues. These dues contribute to a fund that replaces buildings. Attendance Dues are not charged at Wesley College.

None of the money paid by parents / guardians to the Wesley College Trust Board is paid over to the Board of Trustees to provide additional staffing or resources for the school.

The Board of Trustees currently does not charge fees. As the Board of Trustees monitors its financial position and as costs continue to increase consideration is being given to introducing some fees. It may be that in the future a fee is charged to assist meeting the costs of such things as participation in cultural groups and sports’ teams and for school trips: things that the Government Grant to the Board of Trustees does not cover. These fees are charged by many schools.



**TERM TWO CALENDAR 2014**

<b>SUNDAY</b>	<b>4 May</b>	<b>5pm</b>	<ul style="list-style-type: none"> <li>• <b>Boarders return from school holidays by 5pm</b></li> </ul>
<b>MONDAY</b>	<b>5 May</b>	<b>8.20am</b>	<ul style="list-style-type: none"> <li>• <b>TERM TWO COMMENCES</b></li> <li>• <b>Day Students sign in by 8.20am.</b></li> <li>• <b>Compulsory Winter Uniform to be worn.</b></li> </ul>
<b>FRIDAY</b>	<b>16 May</b>		<ul style="list-style-type: none"> <li>• <b>Wesley College Cross Country</b></li> </ul>
<b>FRIDAY</b>	<b>30 May</b>	<b>Exeat Begins</b>	<ul style="list-style-type: none"> <li>• <b>June 1 Return - Class Rolls Begin</b></li> <li>• <b>Exeat begins after 3:20pm</b></li> </ul>
<b>MONDAY</b>	<b>2 June</b>		<ul style="list-style-type: none"> <li>• <b>Queen's Birthday</b></li> </ul>
<b>TUESDAY</b>	<b>3 June</b>	<b>Exeat Ends</b>	<ul style="list-style-type: none"> <li>• <b>Return Count Day</b></li> <li>• <b>Boarder's return by 5pm</b></li> </ul>
<b>WEDNESDAY</b>	<b>4 June</b>		<ul style="list-style-type: none"> <li>• <b>School re-commences</b></li> <li>• <b>Day students sign in by 8:20am</b></li> <li>• <b>June 1 Return - Class Rolls End</b></li> </ul>
<b>THURSDAY</b>	<b>5 June</b>		<ul style="list-style-type: none"> <li>• <b>Senior Mid-year Examinations Begin</b></li> </ul>
<b>WEDNESDAY</b>	<b>11 June</b>		<ul style="list-style-type: none"> <li>• <b>Senior Mid-year Examinations End</b></li> </ul>
<b>THURSDAY</b>	<b>12 June</b>		<ul style="list-style-type: none"> <li>• <b>Junior Mid-year Examinations Begin</b></li> </ul>
<b>WEDNESDAY</b>	<b>18 June</b>		<ul style="list-style-type: none"> <li>• <b>Junior Mid-year Examinations End</b></li> </ul>
<b>MONDAY</b>	<b>30 June</b>		<ul style="list-style-type: none"> <li>• <b>July 1 Return - Class Rolls Begin</b></li> </ul>
<b>TUESDAY</b>	<b>1 July</b>		<ul style="list-style-type: none"> <li>• <b>July 1 Return Count Day</b></li> </ul>

**RAINBOW'S END Night Rides**  
WITH THE EDGE 942 Auckland

**LIVE ACTS:**  
 THURSDAY 19 MAYAVANYA  
 THURSDAY 26 A BIT NIGEL  
 JUNE 03 SIO SILENCE THE CITY  
 PLUS ILLUSIONIST ANDRE VEGAS AS SEEN ON NZ'S GOT TALENT

**ALL RIDES OPEN LIVE MUSIC FUN FOR ALL THE FAMILY 5PM UNTIL 11PM SATURDAYS: 19 & 26 APRIL, 3 MAY**

**NIGHT RIDES PRICES:**  
 ADULT SUPERPASS: GATE \$30, ONLINE \$36 - ALL RIDES  
 CHILD SUPERPASS: GATE \$20, ONLINE \$26 - ALL RIDES  
 KIDZ KINGDOM NIGHT RIDES UNTIL 9PM \$20  
 SUPERIOR RIDES ONLY AVAILABLE WITH ADULT KINGDOM TICKET PURCHASES \$10  
 BUY A REGULAR SUPERPASS AND STAY ALL DAY FOR A FURTHER \$10 STAY ALL NIGHT AS WELL!  
 PURCHASE ONLINE AND SAVE.

**BUY 10 TICKETS ONLINE AND GET 11TH PERSON FREE\* - NIGHT RIDES ONLY. CHECK OUT THE ONLINE DEALS.**

**NEW RIDE OPEN FOR NIGHT RIDES! IT'S OUR SCARIEST YET. WILL YOU BE BRAVE ENOUGH?**

**RAINBOW'S END NZ's Premier Theme Park**

Entertainment WORKS

RAINBOWSEND.CO.NZ / F RAINBOWSENDNZ  
 OPEN DAILY FROM 10AM / PHONE 09 282 2030  
 CNR GREAT SOUTH & MANUKAU STATION ROADS, MANUKAU

<b>WEDNESDAY</b>	<b>2 July</b>	<ul style="list-style-type: none"> <li>• <b>July 1 Return - Class Rolls End</b></li> </ul>
<b>FRIDAY</b>	<b>4 July</b>	<ul style="list-style-type: none"> <li>• <b>TERM TWO ENDS</b></li> <li>• <b>Staff are available in the Whare Angitu (Rec Centre) from 1pm for parent interviews.</b></li> </ul>
<b>SUNDAY</b>	<b>20 July 5pm</b>	<ul style="list-style-type: none"> <li>• <b>Boarders return from school holidays by 5pm</b></li> </ul>
<b>MONDAY</b>	<b>21 July 8.20am</b>	<ul style="list-style-type: none"> <li>• <b>TERM THREE COMMENCES</b></li> <li>• <b>Day Students sign in by 8:20am</b></li> </ul>

	<b>Term Begins</b>	<b>Boarders Return</b>	<b>Day Students Return</b>	<b>Term Ends</b>
<b>T2</b>	<b>5 May</b>	<b>4 May</b>	<b>5 May</b>	<b>4 July</b>
<b>T3</b>	<b>21 July</b>	<b>20 July</b>	<b>21 July</b>	<b>26 September</b>
<b>T4</b>	<b>13 October</b>	<b>12 October</b>	<b>13 October</b>	<b>12 December</b>