



# Wesley College

## PRINCIPAL'S NEWSLETTER

Issue 1

January 2006

### MIHI

E te Iwi  
Tēnā koutou  
Tenei te mihi kia  
koutou i roto i tenei, te  
Tau Hou

“He Tau pai te tau  
He Tau ahuru te tau”

“A good year  
a prosperous year”

Nau mai, haere mai.

### POINTS OF INTEREST

- Service of Beginnings
- Student Checklist
- Staff Contact Phone Numbers
- Staff Contact email addresses
- 2006 Team dates
- Term 1 Calendar
- Friends of Wesley



### KA MATE HE TĒTĒ, KA TUPU HE TĒTĒ

Ko te whanau o te Kura Weteri

E mihi aroha tenei ki a koutou te whanau o Inia Roberts. Ka mate a Inia i te 17 o Kohitatea 2006.

Ki te whanau o Vaughan Rogers (tuakana o Mathew) raua kua wehe atu ki te Atua nui rawa.

The Wesley College Community expresses its condolences to the families of Inia Roberts and Vaughan Rogers who were both sadly killed in accidents during the holidays.

### SERVICE OF BEGINNINGS

I invite family and friends to attend the Service of Beginnings to be held Sunday 12 February, commencing at 11am in the recreation centre. This very special service welcomes all our new students, families and staff to the college. I also welcome to the College Rev Aliitusi Toleafoa - Head of the of Life and Faith Department; Ms Dairne Summerfield - teacher of English; Ms Emma Ratuki - teacher of Health and Physical Education; and Mr Stephen Granshaw - itinerant teacher of Music.

The Service of Beginnings sets the tone for the year and is part of the celebration of our Special Character. The Service will be led by Rev Dr John Salmon, President of the Methodist Church of New Zealand: Te Haahi Weteriana o Aotearoa, and Mrs Mary West Vice President.

### STUDENTS CHECK LIST

#### TERM ONE 2006:

**Boarders** check in Monday 6 February between 1:20pm—3:30pm. Parents depart by 4pm.

We recognise that some boarders and their families will be involved in Waitangi Day celebrations that may delay their return to Wesley College until 7 February.

**Day students** report by 8:20am Tuesday 7 February.

#### CLOTHING:

Please ensure all items of clothing are named and your student has a full set of the number one uniform, their white shirts are able to be buttoned up at the neck and their ties are the right size.

#### STUDENT MONEY ENVELOPE

All personal money should be handed into the office. Students' money is kept in an envelope for safe keeping.

#### SHOP ACCOUNT/TUCK

Parents please discuss with your child/ward what the shop account can or cannot be used for. Arrangements may be made with the office staff to ensure that your son/daughter only purchases items you wish them to have.

#### MEDICATION

Please ensure all medication is handed into the Matrons on arrival with instructions for its use.

#### CELL PHONES

Please give your son/daughter clear instructions about the use of cell phones. Cell phones may not be used during teaching time and the College will not take responsibility for any misuse, damage or loss of a cell phone. There are card phones in several locations around the school/hostels and phone cards may be purchased from the office.

### Student Checklist Continued: 2006 BOARDING FEES

Have you returned your letter advising the college of what arrangements will be in place for the payment of

your child's 2006 Boarding fees? If not, please return your letter on or before 31

January, or contact Mrs Barabara Thoresen on (09) 2370547 to discuss arrangements.

### WESLEY COLLEGE DIRECT DIAL PHONE NUMBERS

Parents and caregivers who wish to make contact with the following staff can phone on their direct dial number as listed below.

Accounts	Mrs Easton	2370549
Chaplain	Rev. S Tongotongo	2370546
Dispensary	Mrs Johnston	2370545
DP Administration	Mr Biddle	2370542
Guidance Councillor	Mr Tema	2370548
Principal's Secretary	Mrs Ngataki	2370541
Trust Board General Secretary	Mr Johnston	2370540
Trust Board Administration Manager	Mrs Thoresen	2370547



### TERM DATES 2006

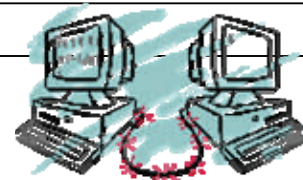
Term 1	Tuesday 7 February	To	Thursday 13 April
Term 2	Monday 1 May	To	Friday 30 June
Term 3	Monday 17 July	To	Friday 22 September
Term 4	Monday 9 October	To	• To be advised (possibly Saturday 10 December)

Waitangi Day	Monday 6 February	Good Friday	14 April
Easter Monday	17 April	Easter Tuesday	18 April
Anzac Day	25 April	Queen's Birthday	5 June
Labour Day	Monday 23 October.		

- The dates for the mid-term breaks (excats) will be advised in the next Newsletter.

### STAFF EMAIL CONTACT DETAILS

Parents, caregivers and guardians who wish to make direct contact with teaching staff via email please note the below listed contact addresses.



Teacher	Email Address	Teacher	Email
BEAN Christopher	chrisb@wesley.school.nz	TOLEAFOA Aliitasi	aliitasit@wesley.school.nz
BIDDLE Roger	rogerb@wesley.school.nz	NATHAN Whetuu	whetuun@wesley.school.nz
CHAINEDY Miriam	miriamc@wesley.school.nz	PALAVI Amanaki	amanakip@wesley.school.nz
CHEESEMAN John	johnc@wesley.school.nz	PAYNE William	willp@wesley.school.nz
CHETTY Jay	jayc@wesley.school.nz	RATUKI Emma	emmar@wesley.school.nz
DAMMERT Mario	mariod@wesley.school.nz	SAMUSAMUVODRE Harata	haratas@wesley.school.nz
DAS Syamal	syamald@wesley.school.nz	SANSON Warrick	warricks@wesley.school.nz
DAY Roger	rogerd@wesley.school.nz	SMYTHE Richard	richards@wesley.school.nz
DE SOYSA Henry	henryd@wesley.school.nz	SUMMERFIELD Dairne	dairnes@wesley.school.nz
EASON Jean-paul	jeanpaul@wesley.school.nz	TEMA Stephen	stevet@wesley.school.nz
FAITALA Natalie	natalief@wesley.school.nz	TUORO Adrian	adriant@wesley.school.nz
JOHANSSON Michelle	michellej@wesley.school.nz	UMBERS Richard	richardu@wesley.school.nz
LINDSAY Brent	brentl@wesley.school.nz	WHITE Steven	stevenw@wesley.school.nz
LEGER Nicholas	nichl@wesley.school.nz	WILLS Molly	mollyw@wesley.school.nz

